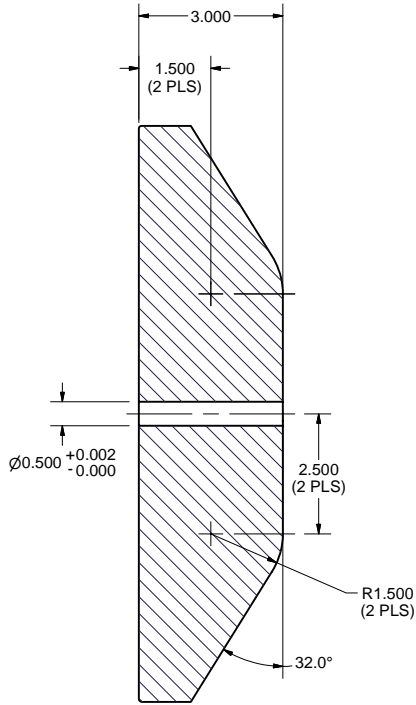
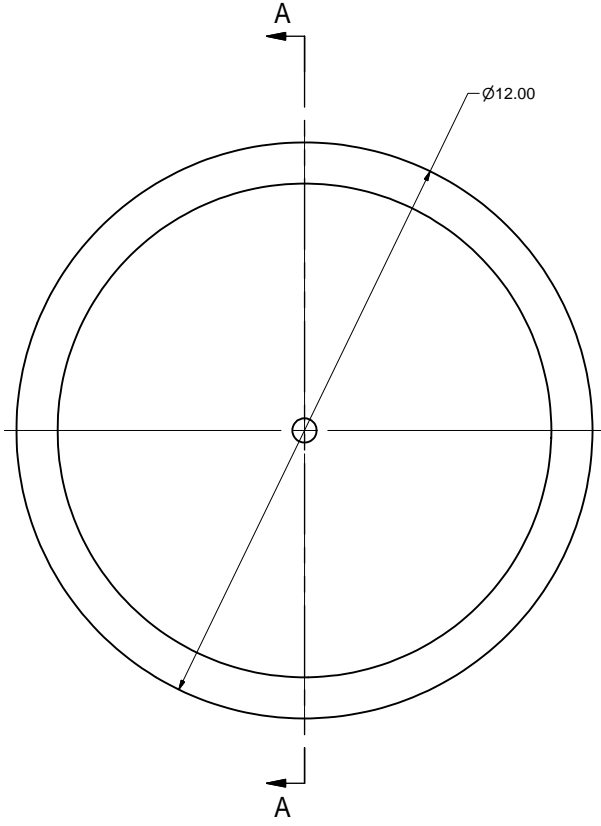
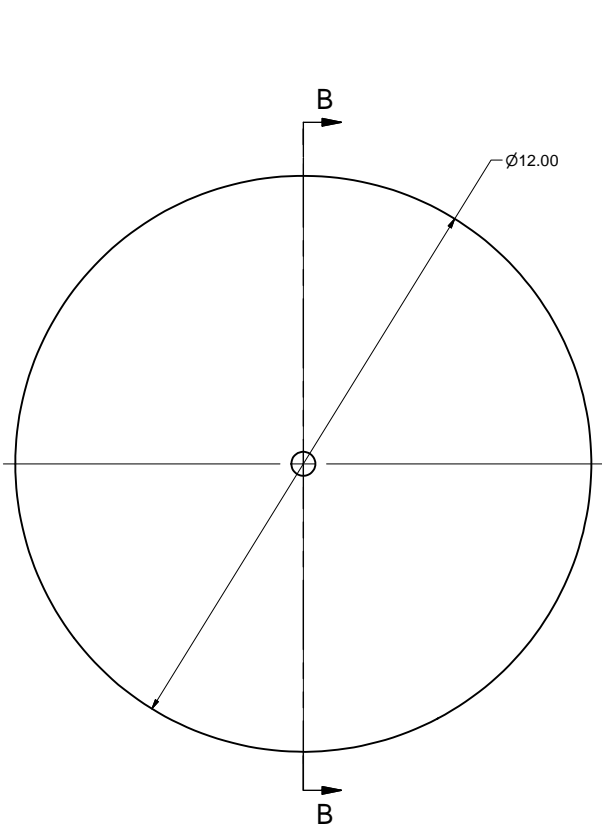


REVISIONS				
SYM.	ZONE	DESCRIPTION	DATE	APP.
A	C-8,C-2	DIE A & B; 32.0 DEG. WAS 30.0 DEG. ADDED JGL	8/10/05	TIO

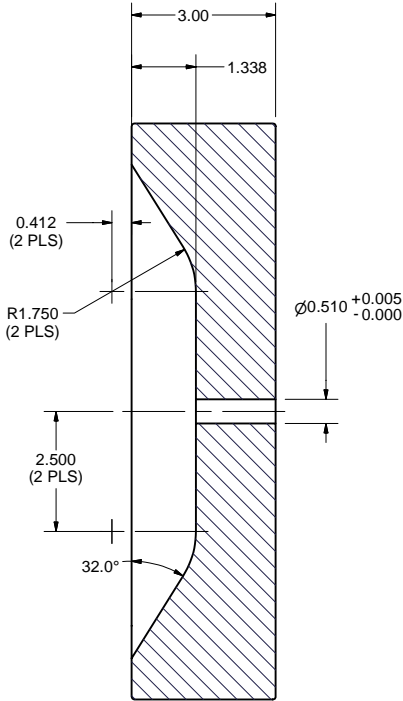


SECTION B-B
SCALE 1 / 2

A MALE DIE
FILE NAME: 7102-009
SHEET NO.: 1
DFT. SCALE: 1:2
MATERIAL: ALUMINUM
QTY: 1
NOTES: BREAK EDGES ON OUTSIDE DIAMETERS



B FEMALE DIE
FILE NAME: 7102-009
SHEET NO.: 1
DFT. SCALE: 1:2
MATERIAL: ALUMINUM
QTY: 1
NOTES: BREAK EDGES ON OUTSIDE DIAMETERS



SECTION A-A
SCALE 1 / 2

NOTE 1) A 32' DIE SET PRODUCES A NOMINAL 30' PRESSED PART, COPPER AND TITANIUM, ACCOUNTING FOR MATERIAL SPRING BACK. THE FINISHED PARTS 7102-010, #7 AND #30, ARE THE RESULT OF THIS DIE SET.

	ITEM	DWG. NO.	DESCRIPTION			G1	G2	G3	REMARKS	REV.					
				QUANTITY											
	PRINT DISTR.	PLOT DATE: 8/10/2005 CAD FILE NAME: 7102-009.idw													
		7102-009 SH. NO. 1 OF 1	CR-1	<div>UNLESS OTHERWISE SPECIFIED: DIMENSIONS ARE IN INCHES: TOLERANCES ON: .00 ± .010 .000 ± .005 FRACTIONS ± 1/64 ANGLES ± 0.5° ALL SURFACES </div>			<div>CORNELL UNIVERSITY Floyd R. Newman Laboratory Ithaca, NY 14853</div>								
ERL INJECTOR CRYOMODULE COLD MASS CONE WALL DIE SET WBS-3.1.1.8															
A	REV.			CHECKED BY: J. KAMINSKI			DRAWN BY		DRAWN FOR		DATE		SCALE AS NOTED		
		APPROVED BY: J. KAMINSKI			JGL		J.KAMINSKI		10/1/2004						